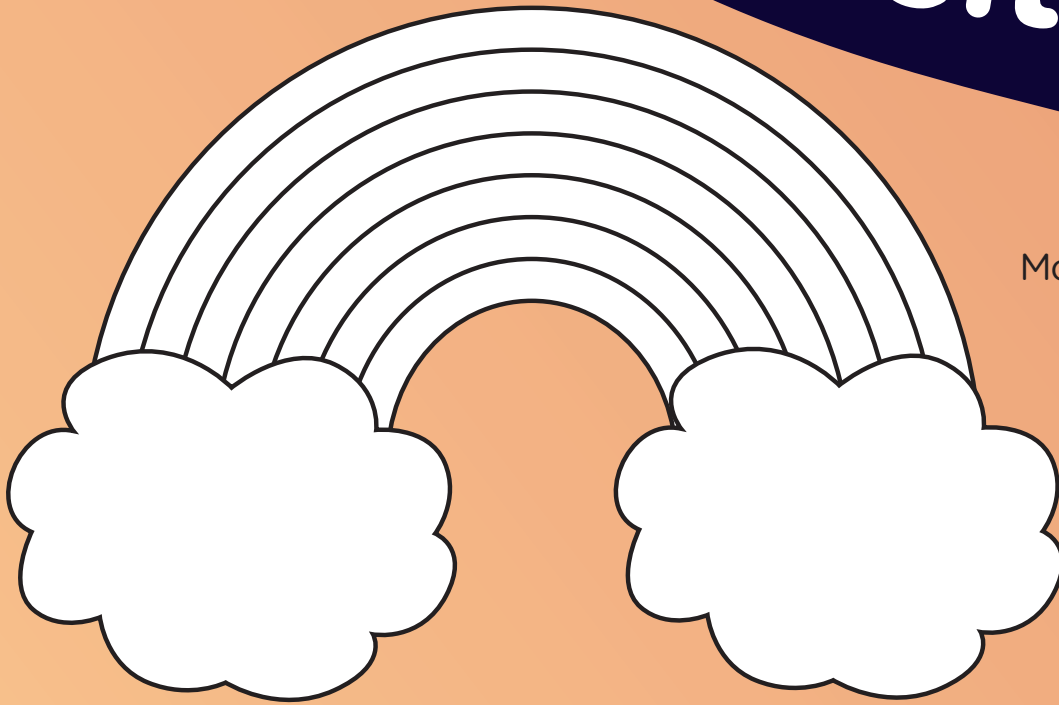
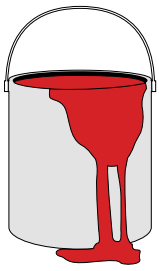


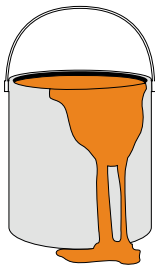
Gweithlen!



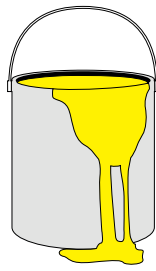
Dyma enfys.
Mae saith lliw mewn enfys.



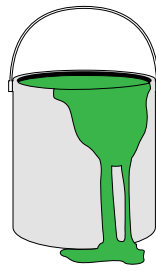
coch



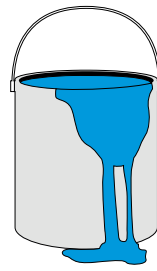
oren



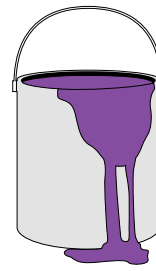
melyn



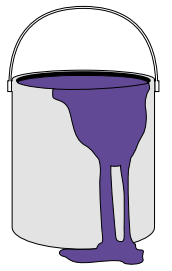
gwyrdd



glas



piws/
porffor



fioled

Lliwia'r enfys gan ddefnyddio'r lliwiau cywir yn y drefn gywir.

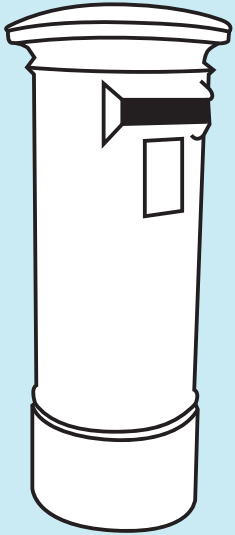
Llenwa'r bylchau a sgrifennu'r frawddeg gyfan eto.

Beth ydy dy hoff liw di? Fy hoff liw i ydy _____

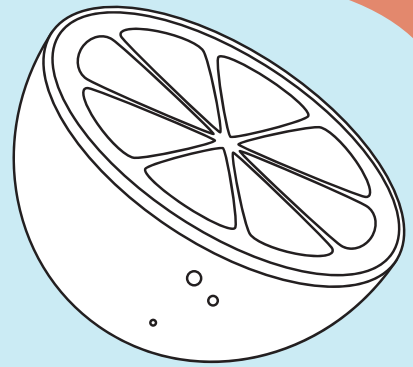
Pa liwiau ydy dy wisg ysgol? Lliwiau fy ngwisg ysgol ydy _____

Oes na liw wyt ti ddim yn hoffi? Dw i ddim yn hoffi liw _____

Lliwiau'r rhain yna ysgrifenna'r lliw wrth ymyl.

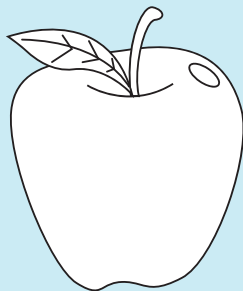


_____ yw lliw blwch post.

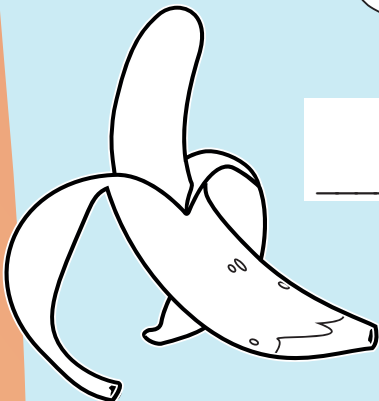


Mae oren yn _____!

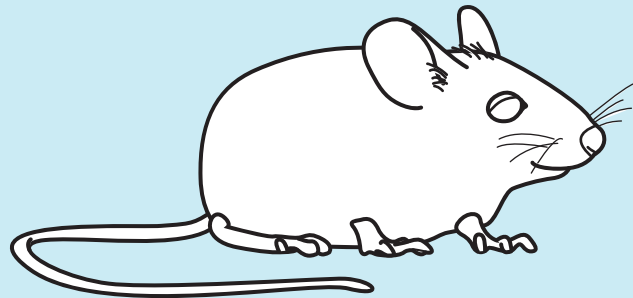
Mae esgidiau bale yn _____.



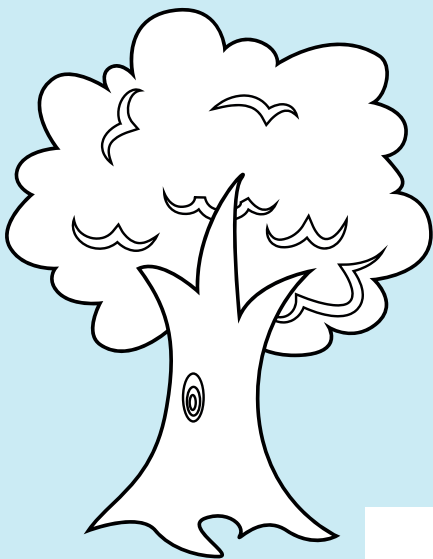
_____ yw lliw afal.



_____ yw lliw banana.

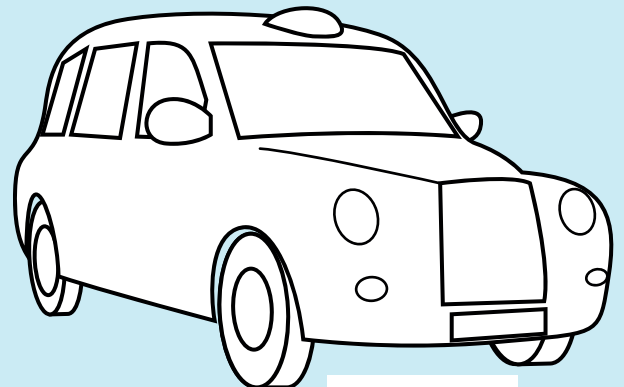


_____ yw'r llygoden fach yma.



Mae boncyff coeden yn _____

a'r dail yn _____.



Mae tacsis Llundain yn _____.